

May 2021

## South Schuylkill Garden Club

Third Tuesday of the Month at 6:30

Jerusalem Lutheran Church, Schuylkill Haven

[www.southschuylkillgardenclub.com](http://www.southschuylkillgardenclub.com)

[www.facebook.com/soschuylkillgardenclub.com](https://www.facebook.com/soschuylkillgardenclub.com)



### Cultivating the Community Newsletter

*Weather Folklore:* “

#### Date Change

**May** club meeting which was originally set for May 18 has been rescheduled for **May 4**. This is a change that you might want to make in your program book for 2021. The reason for the date change for the meeting, which will be held on the Island in Schuylkill Haven under the pavilion, is to accommodate the Plant Sale scheduled for May 22. **A 6PM start time** for this meeting is scheduled for the sake of daylight. Club members on the **4 of May** will be determining what needs to be done as final preparation for the Plant Sale.

#### Plant Sale

South Schuylkill Garden Club is planning to host an outdoor plant sale at the Schuylkill Haven Recreation/Senior Center on Saturday, **May 22**. Consider what you would like to contribute. More on this as the plans materialize.

Nancy has been working overtime preparing for the plant sale. She certainly has a green thumb by the photos below.

**Way to go Nancy!**

#### Hello all garden club members!

It is plant sale time which means we all should be thinking how we will contribute to the success of one our biggest fundraisers.

The plant sale committee will need help with the following:

- Donation of plants from your garden which should be potted now
- Donation of purchased plants for resale
- Donation of your time on Friday, May 21, 2021 to help set up, receive, price and assure plants are appropriately labeled for sale
- Donation of your time on Saturday, May 22, 2021 to help customers as they browse our lovely plants.
- Borrow a pop-up canopy for shade or protection in case of rain...we still need one of these if any of you members have one that the club can use on the day of the sale

Our first SSGC meeting will be held May 4th....next week. Bring a list of the names of plants you are providing for the plant sale with you to the meeting and also how many of each. You can always bring more at plant sale time but we need a starting point to see what we have and what we need. Also, we

will have a signup sheet for hours you will work for setup and sale day.

I hope that sale day will be a day for mingling and getting to know each other better. Remember to pack a lunch and drink or we can take turns running to a local eatery with a buddy if we plan well.

If you have a list of plants that you know you have already for the sale, email me the names and numbers of each plant.

Some of you have been saving flat boxes and bags. Include anything else you will bring to the sale.

Happy planting!

Nancy Russial  
Plant Sale Co-chair 2021



### Planting by the Moon

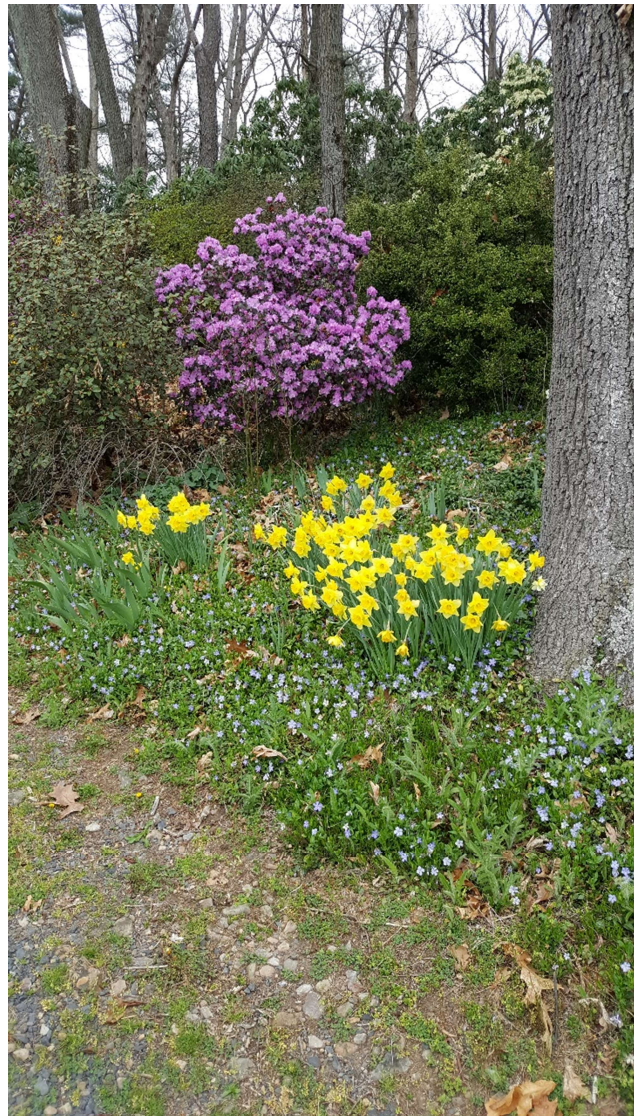
Never heard of this maybe you have. It is called moon phase gardening and it takes its action during the two basic periods of the Moon.

- **Waxing of the Moon:** this is the time between the new moon and full moon when the moon visibly increases in size thanks to illuminating from the sun. During this time, the moons gravitational pull on Earth draws moisture up toward the surface. Seeds do well and plants are encouraged to grow more leaves and stems. This is a good time to plant crops that bear above ground (e.g., beans, tomatoes and corn) as well as flowering annuals.

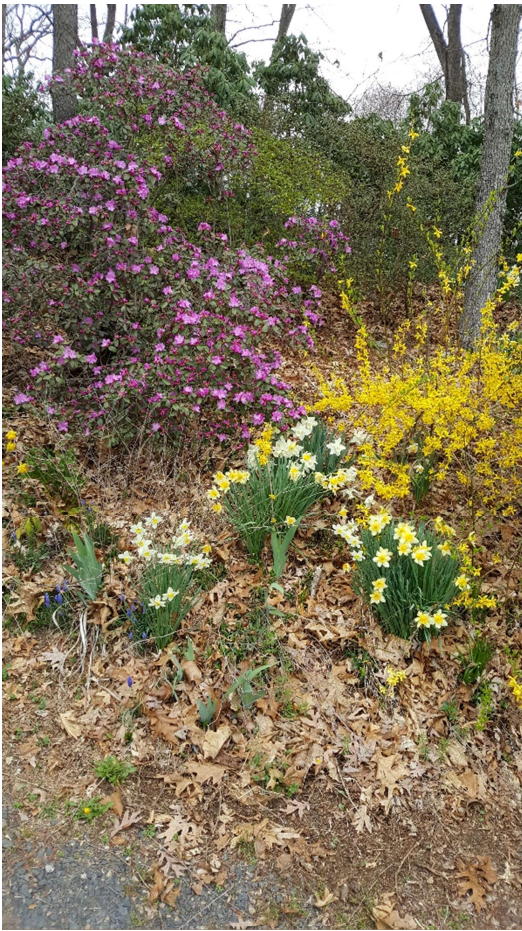


- **Waning of the Moon:** This is the time between the full moon and new moon. As the amount of illumination by the sun decreases, the moon's gravitational pull also decreases. Plants are encouraged to grow roots, tubers and bulbs. Use this time to plant crops that bear below ground (e.g., carrots, onions and potatoes) as well as flowering bulbs, biennials and perennials.

**For those of you unable to get out to see Helen's yard this spring in all its glory, here are some photos. No accounting for the photographer.**















**Stay Safe by staying socially separated from others by at least 6 feet. Wash hands frequently and above all don't touch your face, but with clean hands.**



## **Seed Starting Made Simple**

[https://psu.mediaspace.kaltura.com/media/Seed+Starting+Made+Simple+Webinar+on+03.18.2021/1\\_4un67q01](https://psu.mediaspace.kaltura.com/media/Seed+Starting+Made+Simple+Webinar+on+03.18.2021/1_4un67q01)